

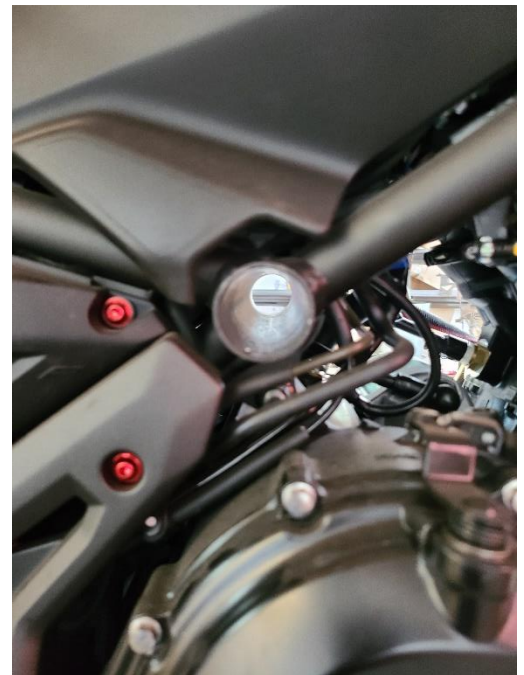
Z650 crash cage installation guide



- Place a jack underneath the engine to support it from falling. (although it is not required we highly recommend it)



- Remove end caps from both sides of the bike.

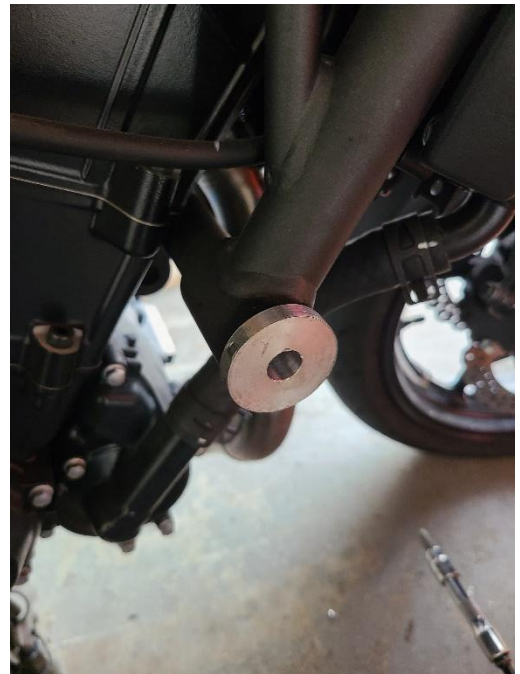




- Insert the rear spacer in both ends of the frame.



- Remove the bolt on the front right engine mount.
- insert FRONT SPACER into the frame mount.





- Place the 7/16s all thread with nut and washer through the rear mount. M10 x 180mm bolt and washer through the front right.

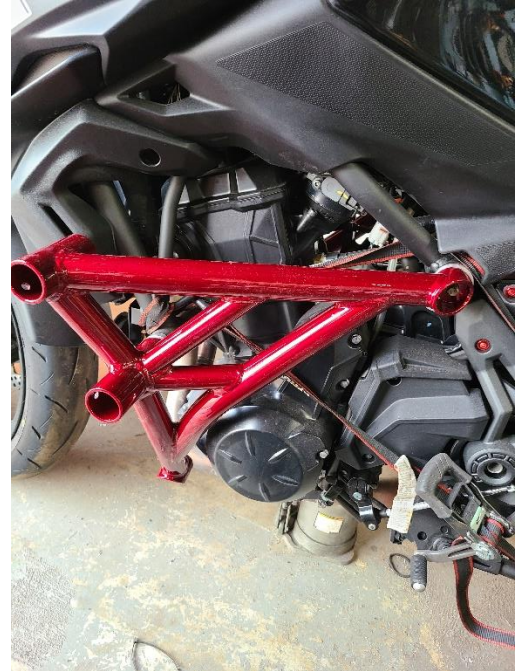


- align the cage with mount points and lightly secure the front mount



- Moving to the front left remove the engine bolt and place the front engine spacer in place.

- Place the m10 x 160mm in the front left mount.



- Take the lower cross bar and place in between the lower cage mount and secure with the bolts provided.

- Place the nut on the rear mount.





- Proceed to tighten all bolts to specs.
- Lastly insert all Delrin sliders into the cage and secure with the set screws provided.

• ITEM	THREAD SIZE	TIGHTENING TORQUE SPECS		
		Nm	m•kgf	ft•lbf
MIDDLE ENGINE BOLT	M10	55	5.5	40
REAR BOLT	7/16	94.9	9.49	70
CROSS BARS	3/8	30	3.0	22
DELTRIN PUCKS	M8	19	1.9	14.1