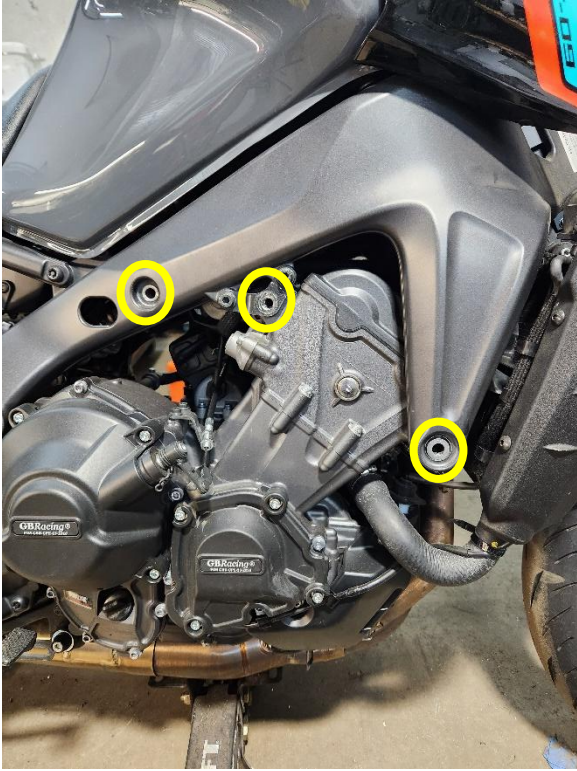


## 21+ MT09 CRASH CAGE INSTALLATION GUIDE



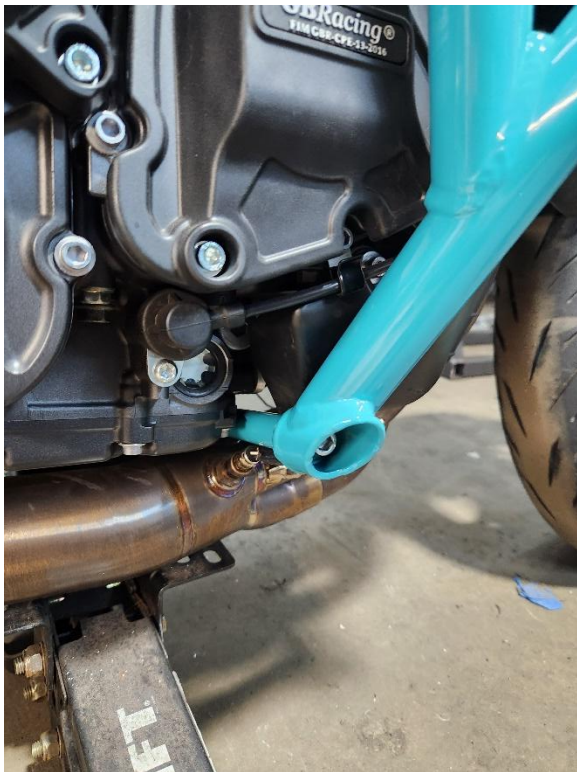
- Start by supporting the engine with a jack underneath the engine headers.
- Remove the three engine bolts circled on the right side.



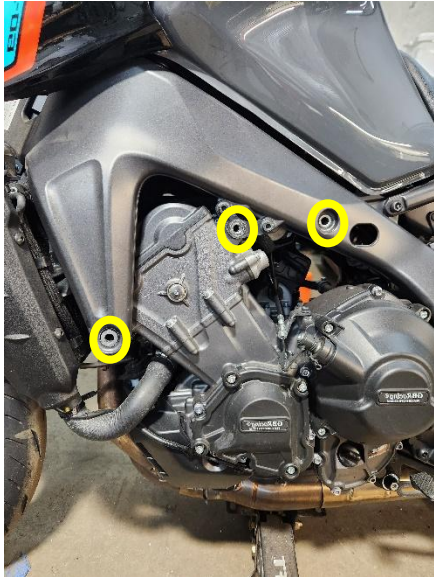
- With the included labeled hardware place the bolts and spacers into the cage as followed.
- M10 x 100mm rear plate with 1" spacer
- M10 x 50mm right middle with .5" spacer
- M10 x 70mm right front with .5" spacer



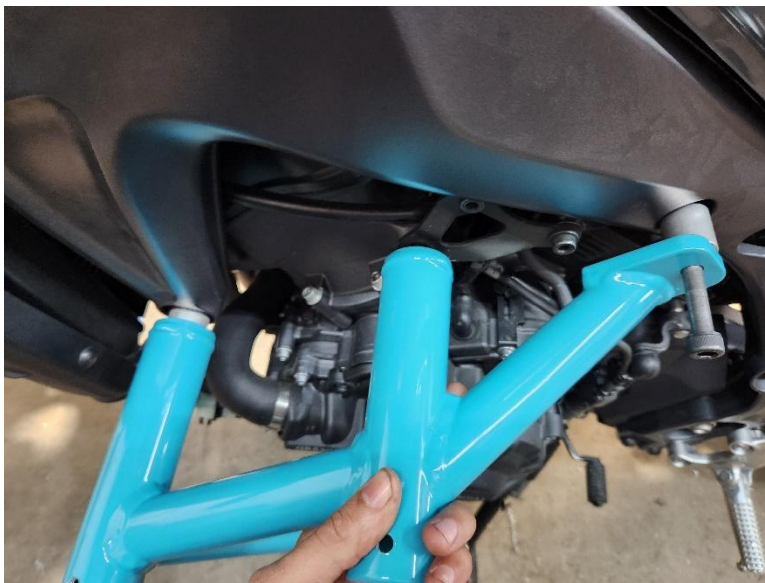
- Lightly thread the bolts into the frame to hold the cage in position. (DO NOT TIGHTEN AT THIS POINT)



- Place the lower cross bar through the bike and lightly thread the bolt in.



- Going to the left side of the bike remove the three engine bolts circled.



- Take the following hardware and install them in the position as shown.
- M10 x 100mm rear plate with 1" spacer
- M10 x 40mm middle no spacer
- M10 x 70mm left front with .5" spacer
- Connect the lower cross bar to the left side cage

Once both sides of the cages are on proceed to tighten each bolt to spec.

ITEM	THREAD SIZE	TIGHTENING TORQUE SPECS		
		Nm	m•kgf	ft•lbf
FRONT ENGINE BOLT	M10	33.9	3.39	25
MIDDLE ENGINE BOLT	M10	33.9	3.39	25
REAR ENGINE BOLT	M10	33.9	3.39	25
CROSS BARS	3/8	30	3.0	22
DELIRIN PUCKS	M8	19	1.9	14.1

Lastly install all Delrin sliders into the puck mounts and tighten them with the set screws provided.